



EPSA-CTW

Conductivity and Temperature Logger with Wiper



ACTW-WFX

ACTW-WFX-L

JFE Advantech Co., Ltd.

EPSA-CTW

Model: ACTW-WFX / ACTW-WFX-L

■ Description

EPSA-CTW is an accurate conductivity and temperature meter making use of 7-electrode sensor with an enhanced double wiper to avoid bio-fouling. This 7-electrode generates an electric current only inside of the conductivity cell, minimizing external influences improving data quality. Thus, precise salinity measurements are possible under bio-foul forming conditions. The compact design is suitable to be deployed/integrated with various sites/platforms.

■ Sensor specifications

Parameter	Temperature	Conductivity
Principle	Thermistor	7-electrode
Range	-3 to 45 °C	0.5 to 70 mS cm ⁻¹ *
Resolution	0.001 °C	0.001 mS cm ⁻¹
Accuracy	±0.01 °C (0 to 35 °C)	±0.01 mS cm ⁻¹ (28 to 65 mS cm ⁻¹)

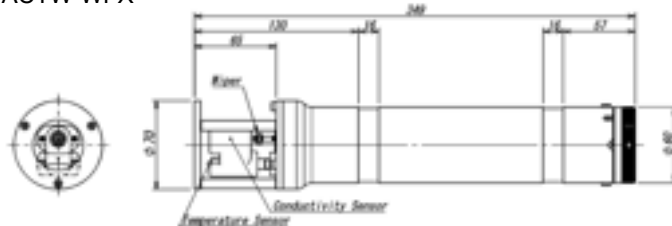
* Please contact us for fresh water conductivity measurements.

■ Instrument specifications

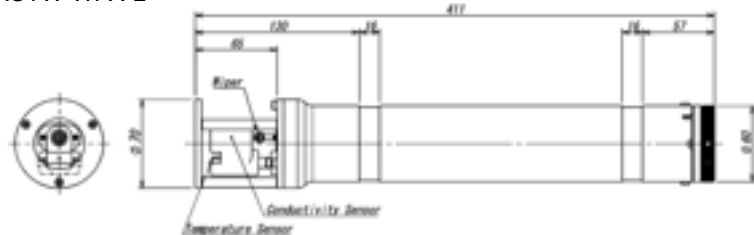
Model	ACTW-WFX	ACTW-WFX-L
Memory medium	1 GB built-in Flash memory	
Maximum data recordable	Approx. 15 million readings	
Measuring mode	Continuous, Burst	
Measuring interval	0.1 to 1 sec. (0.1 sec. increment) / 1 to 600 sec. (1 sec. increment)	
Burst sampling interval	1 to 1,440 min. (1 min. increment)	
Number of samples	1 to 18,000	
Power source	1.5 V AA alkaline battery / 1.5 V or 3.6 V (SAFT) AA lithium battery	
Number of batteries	Max. 6	Max. 12
Communication	USB 2.0 (ver. 1.1 compatible) / Connector: USB-C	
Housing material	Titanium (grade 2)	
Dimensions	Φ70 mm x 349 mm	Φ70 mm x 411 mm
Weight	Approx. 1.7 kg in air, 0.9 kg in water	Approx. 2.2 kg in air, 1.2 kg in water
Depth rating	500 m equivalent	

■ Drawing

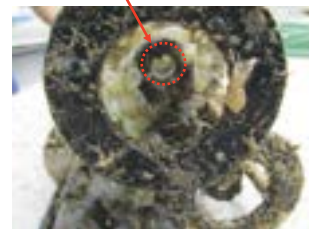
ACTW-WFX



ACTW-WFX-L



Bio-foul inside the cell is removed by the wiper



※ Dimensions are in mm. ※ All specifications on this leaflet are subject to change without notice.



JFE Advantech Co., Ltd.

Ocean & River Instruments Division
URL: <https://www.jfe-advantech.co.jp/eng/>

Head Office

3-48 Takahata-cho, Nishinomiyu, Hyogo 663-8202
TEL. +81-798-24-2465 FAX. +81-798-66-1654

Tokyo Sales Office

JFE Kuramae Bldg. 2F, 2-17-4 Kuramae, Taito-ku, Tokyo 111-0051
TEL. +81-3-5825-5589 FAX. +81-3-5825-5591